

POLE TOP DIAM.
11.88" AF 12-SIDED

A▼

▼A

B▼

▼B

B▼

▼B

C▼

▼C

65'-0" OVERALL LENGTH

TOP SECTION LENGTH 42'-0"
3/16" A572 GRADE 65

BOTTOM SECTION LENGTH 26'-0"
3/16" A572 GRADE 65

3'-0" LAP JOINT
2'-9" MIN/3'-4" MAX

EXISTING NEMA PAD

1" HH NUT
@ 30" OC TYP.
FOR JOINING POLE
10 TONS PER SIDE

3'-0" CORROCOOTE

8'-0" UNCOATED

POLE BASE DIAM.
29.81" AF 12-SIDED

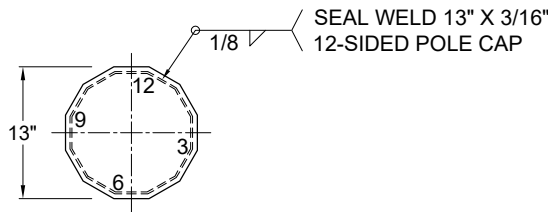
4'-8 1/2"

23'-4 1/2"

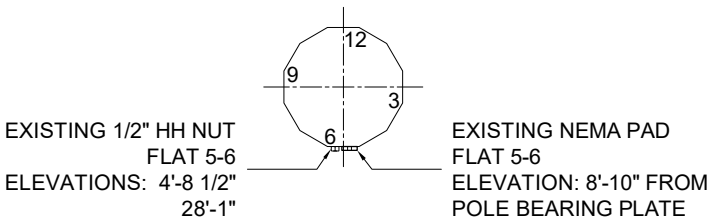
28'-1"

POLE COMPONENT INFORMATION			
ITEM	QTY.	DESCRIPTION	WT. EACH
1	1	STEEL POLE TOP SECTION 42'-0" LONG	1,510
2	1	STEEL POLE BOTTOM SECTION 26'-0" LONG	1,490
TOTAL WEIGHT			3,000 LB

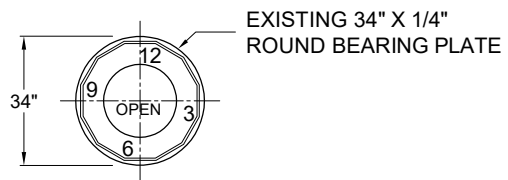
ALL OF OUR INVENTORY CAN BE MODIFIED TO FIT YOUR SPECIFICATIONS, INCLUDING VANGS, ARM CONNECTIONS, GROUNDING, AND PRE-DRILLED HOLES.



SECTION A-A
POLE CAP



SECTION B-B
GROUNDING



SECTION C-C
BEARING PLATE

65FT CLASS H9
POLE TYPE: PR65
POLE WEIGHT: 3,000 LB
(1460) AVAILABLE

