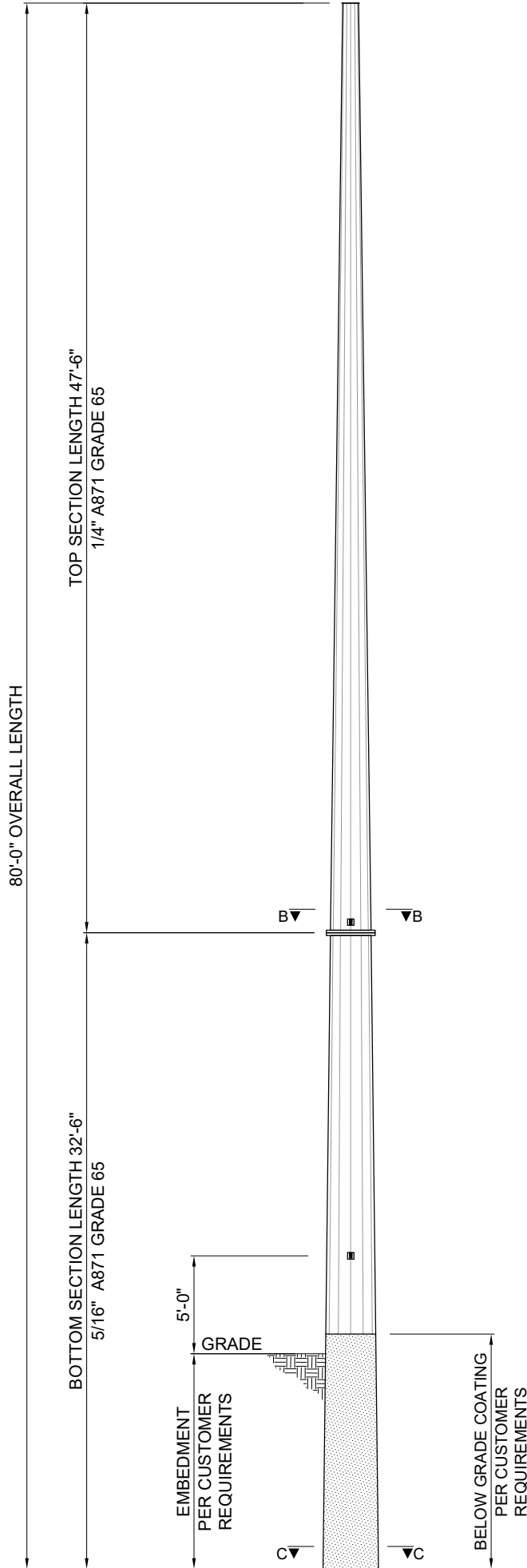


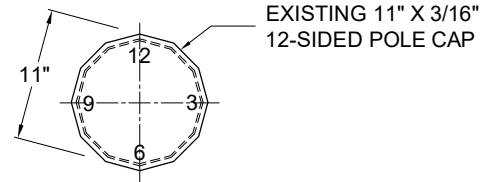
POLE TOP DIAM.
9.75" AF 12-SIDED

A▼ ▼A

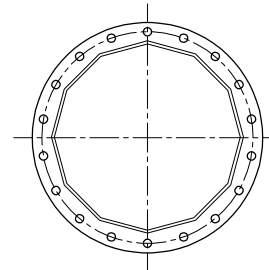


POLE COMPONENT INFORMATION			
ITEM	QTY.	DESCRIPTION	WT. EACH
1	1	STEEL POLE TOP SECTION 47'-6" LONG	3,500
2	1	STEEL POLE BOTTOM SECTION 32'-6" LONG	2,960
TOTAL WEIGHT			6,460 LB

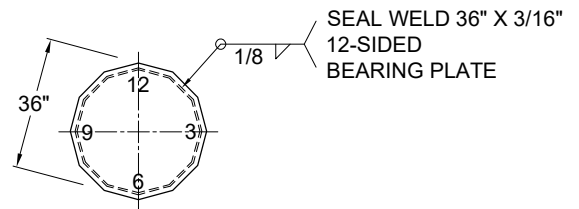
ALL OF OUR INVENTORY CAN BE MODIFIED TO FIT YOUR SPECIFICATIONS, INCLUDING VANGS, ARM CONNECTIONS, GROUNDING, AND PRE-DRILLED HOLES.



SECTION A-A
POLE CAP



SECTION B-B
FLANGE PLATE



SECTION C-C
BEARING PLATE

80FT CORTEN
POLE TYPE: PP80
POLE WEIGHT: 6,460 LB
(15) AVAILABLE

