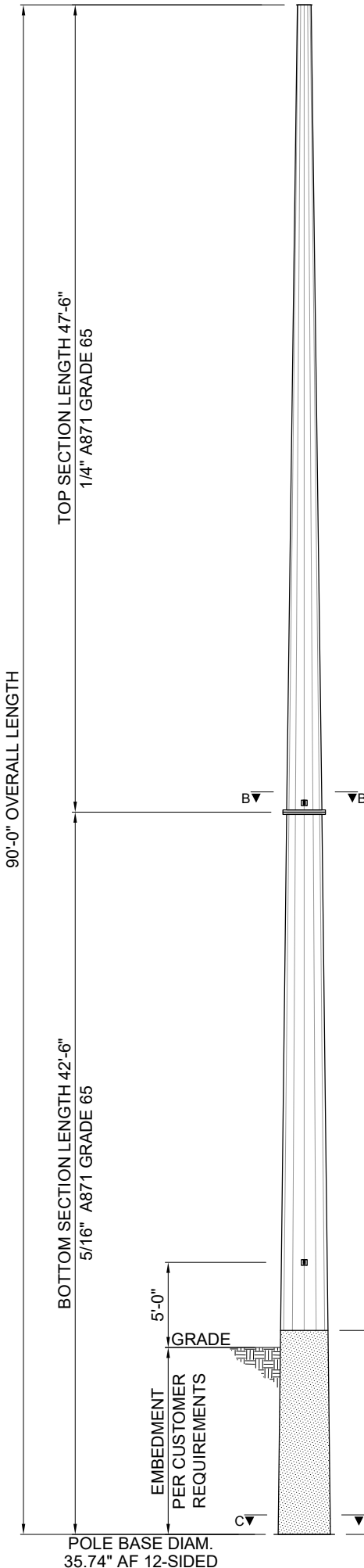


POLE TOP DIAM.
9.75" AF 12-SIDED

A▼ ▼A



TOP SECTION LENGTH 47'-6"
1/4" A871 GRADE 65

BOTTOM SECTION LENGTH 42'-6"
5/16" A871 GRADE 65

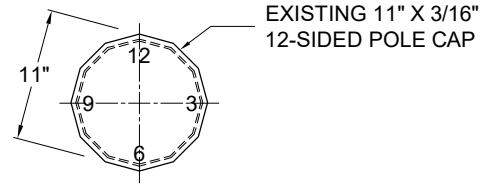
EMBEDMENT
PER CUSTOMER
REQUIREMENTS

POLE BASE DIAM.
35.74" AF 12-SIDED

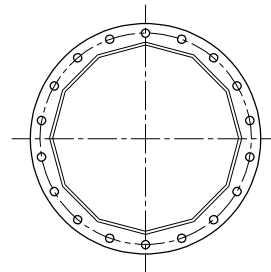
BELOW GRADE COATING
PER CUSTOMER
REQUIREMENTS

POLE COMPONENT INFORMATION			
ITEM	QTY.	DESCRIPTION	WT. EACH
1	1	STEEL POLE TOP SECTION 47'-6" LONG	3,500
2	1	STEEL POLE BOTTOM SECTION 42'-6" LONG	4,060
TOTAL WEIGHT			7,560 LB

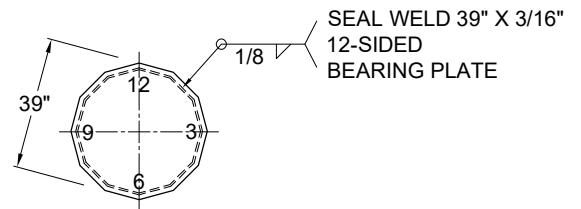
ALL OF OUR INVENTORY CAN BE MODIFIED TO FIT YOUR SPECIFICATIONS, INCLUDING VANGS, ARM CONNECTIONS, GROUNDING, AND PRE-DRILLED HOLES.



SECTION A-A
POLE CAP



SECTION B-B
FLANGE PLATE



SECTION C-C
BEARING PLATE

90FT CORTEN
POLE TYPE: PP90
POLE WEIGHT: 7,560 LB
(10) AVAILABLE

