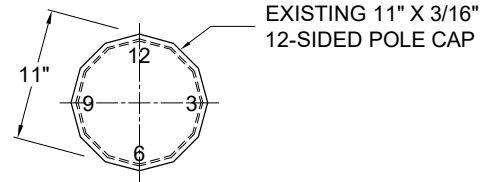
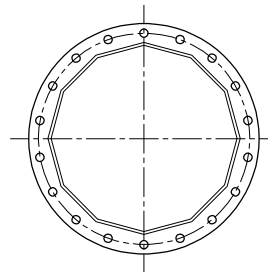


POLE COMPONENT INFORMATION			
ITEM	QTY.	DESCRIPTION	WT. EACH
1	1	STEEL POLE TOP SECTION 47'-6" LONG	3,500
2	1	STEEL POLE BOTTOM SECTION 47'-6" LONG	4,830
TOTAL WEIGHT			8,330 LB

ALL OF OUR INVENTORY CAN BE MODIFIED TO FIT YOUR SPECIFICATIONS, INCLUDING VANGS, ARM CONNECTIONS, GROUNDING, AND PRE-DRILLED HOLES.

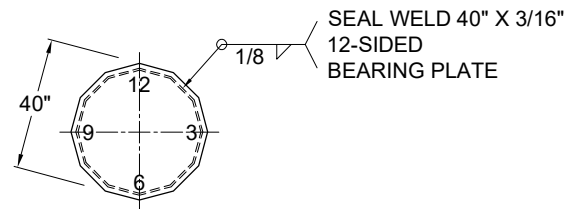


SECTION A-A  
POLE CAP



FLANGE PLATE  
(18) 1 1/8 Ø" HOLES  
ON 27 1/2" BCD  
30" Ø X 1 5/8"  
GRADE 60

SECTION B-B  
FLANGE PLATE



SECTION C-C  
BEARING PLATE

95FT CORTEN  
POLE TYPE: PP95  
POLE WEIGHT: 8,330 LB  
(5) AVAILABLE

